



HOLLY PRICE POWERED BY **exp** TM UK

@ holly.price@exp.uk.com

hollyprice.exp.uk.com

01904 373131

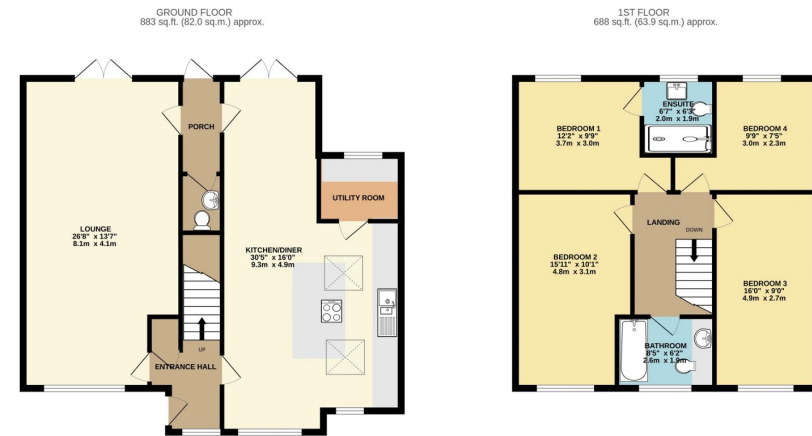
14 Nevis Way,
Offers Over £500,000

🛏️ 4 🚿 2 🛋️ 2



- Please quote HP0386 when requesting further information or to arrange a viewing
- Sewing Kitchen Diner With Large Breakfast Island
- Watch The Video Tour!
- Versatile Living For Modern Family Life
- Quiet and Popular Woodthorpe Village Location
- 4 Bedroom Detached Family Home
- Sunny Low Maintenance Garden To Rear
- Driveway Parking for Multiple Cars + Garage
- Move Straight In Condition





Located on a quiet street in the popular village of Woodthorpe, is this extended and beautifully presented 4 bedroom detached property with open plan spaces, a stunning modern kitchen and huge amounts of flexible living accommodation for any growing family. All you need to do is move your furniture straight in. Welcome to Nevis Way.

Score	Energy rating	Current	Potential
92+	A		
81-91	B		82 B
69-80	C	73 C	
55-68	D		
39-54	E		
21-38	F		
1-20	G		

eXp World UK Ltd is a registered company at Level 37, 25 Canada Square, London, E14 5LQ.

Registered company number is 12016573. VAT Registration Number is 327 4120 29